

In-wall mounting set St



Attention

Ideally, the In-wall mounting set St should be mounted at a height of 143 cm (upper edge of the installation housing).

Package contents

- In-wall mounting set St (consisting of an installation housing, a stainless steel mounting plate and a stainless steel panel), including nuts and one allen screw
- 4 x flat screws 4x35 mm plus anchors

Installation

1. Cut out the installation housing guide (page 2) along its border.

Position the upper edge of the installation housing guide at a height of approximately 143 on the wall and draw its silhouette using a pencil. Next, cut out an 8 centimetres deep open space along the selection.

Place the installation housing into the open space and mark the spots for fixing the anchor fittings and cables. Drill the holes and mount the installation housing into the wall using the accompanying fittings and screws. Alternatively, it is also possible to fix the installation housing using fitting foam glue.

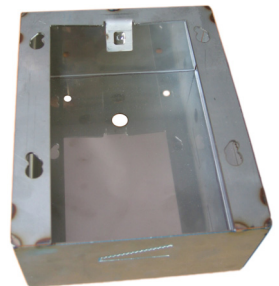


Fig. 1

2. Fix the plastic mounting plate of the scanner unit onto the stainless steel mounting plate (the plastic mounting plate and necessary screws are provided with the scanner unit).

Fix the scanner unit onto the plastic mounting plate using a star screw (provided with the scanner unit).

(Figure 2 and 3)



Fig. 2



Fig. 3

3. Fix the mounting plate onto the back of the stainless steel panel using the accompanying screw nuts. Do not tighten the screw nuts too strongly (risk of damage)! Stick the front panel to the mounted back panel.

Finally fix and align the front panel using the accompanying allen screw to the mounted back panel.

(Figure 4, 5 and 6)

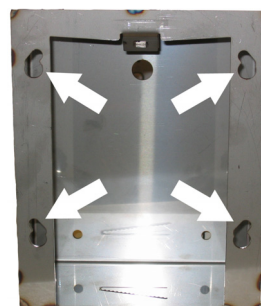


Fig. 5



Fig. 6

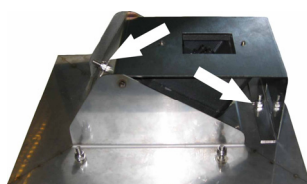


Fig. 4

Dimensions of the installation housing:

Width: 14.5 cm
Height: 18.1 cm
Depth: 7.7 cm



In-wall mounting set St

Dimensions of the stainless steel panel:

Width: 17 cm
Height: 20.5 cm
Depth: 1 mm

**Upper edge
Installation housing
143 cm**

7.7cm

