

Software

ekey TOCAhome pc

V. 2.1

Table of Contents

1.	PURPOSE OF THIS DOCUMENT	3
2.	SOFTWARE OPERATING INFORMATION	3
3.	ASSEMBLY, INSTALLATION AND INITIAL USE.....	3
4.	CONFIGURATION AND SETTINGS.....	5
4.1.	CONFIGURATION	5
4.2.	CREATING A CONNECTION	7
4.3.	RELAY SWITCH TIMES	7
4.4.	CHANGING THE PASSWORD	8
5.	USER ADMINISTRATION.....	8
5.1.	CREATING USERS AND USERS AUTHORIZATIONS	8
5.2.	DOCUMENTATION OF USER ACTIVITIES.....	12
5.3.	OFFLINE OPERATION	13
5.4.	DELETING USERS AND USER AUTHORIZATIONS.....	13
6.	ADDITIONAL MENU FUNCTIONS	13
6.1.	INFORMATION	13
6.2.	SHUTDOWN	13
7.	NOTIZEN	14

1. Purpose of this document

This document describes the functions of the administration software provided in conjunction with the ekey TOCAhome pc.

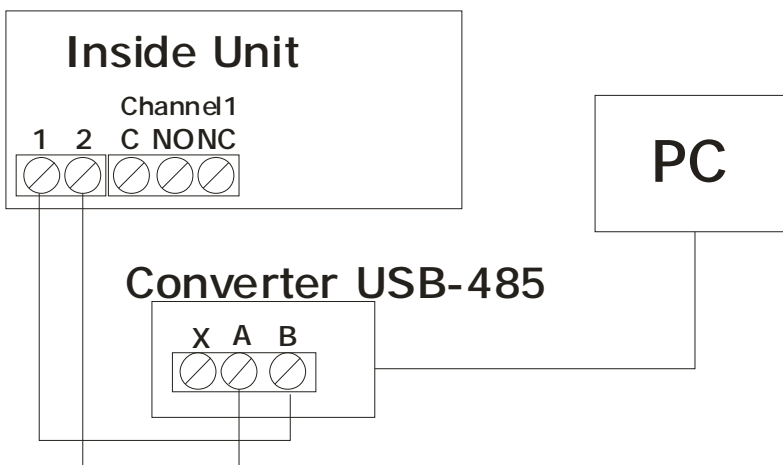
2. Software operating information

Either Windows 2000 or Windows XP must be installed on your computer in order to be able to use the administration software.

3. Assembly, installation and initial use

The software can be used for the first time after the internal and external units have been properly initialized (see Assembly and Operating Manual). You will find further information on this topic in Chapter 4 of the ekey TOCAhome handbook.

Install the software provided on the CD ROM on your computer and make sure that the included RS 485 interface cable on the internal unit is connected to the USB converter and that the USB converter is connected to your computer.



The USB interface is listed under *Ports (COM and LPT)* in the popup window of the device manager. In this example it is listed as *COM3*.

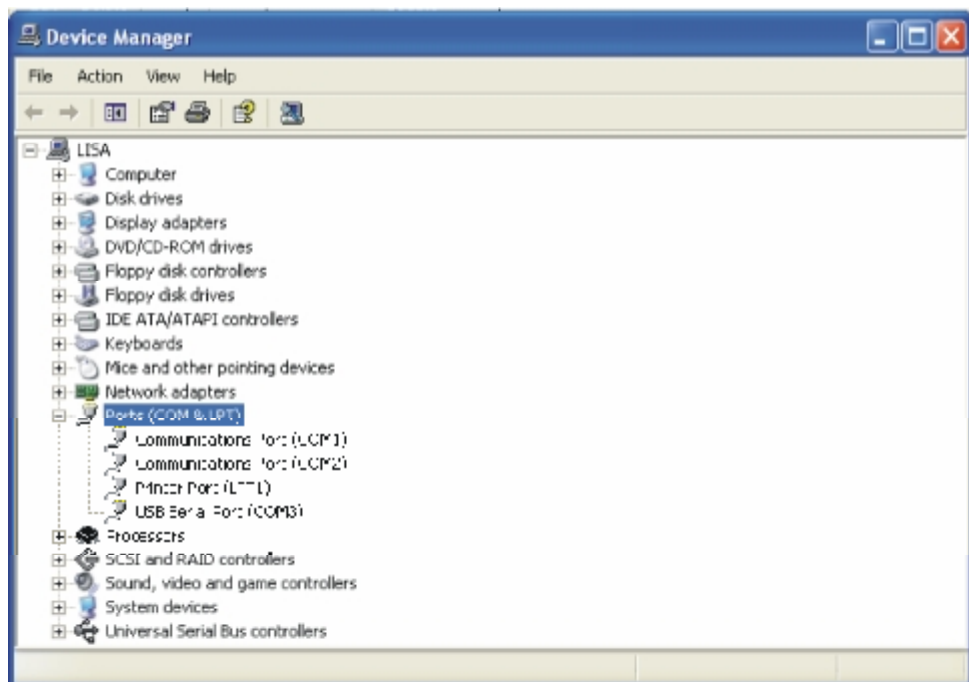


Figure A

All other TOCAhome pc settings (such as *Save Finger*) can be defined by using the PC and the software.

4. Configuration and settings

4.1. Configuration

The window shown in Figure B is displayed after the program is started.

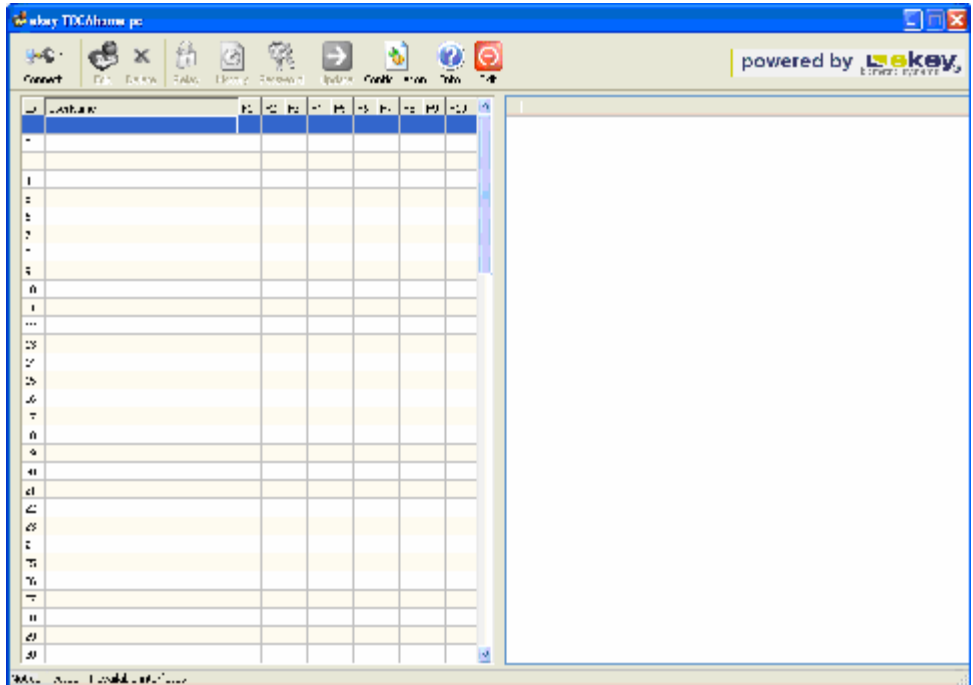


Figure B

Press the *Configuration* button to go to the window shown in Figure C. The respective COM port is selected in this window. In the example above it is *COM3*.

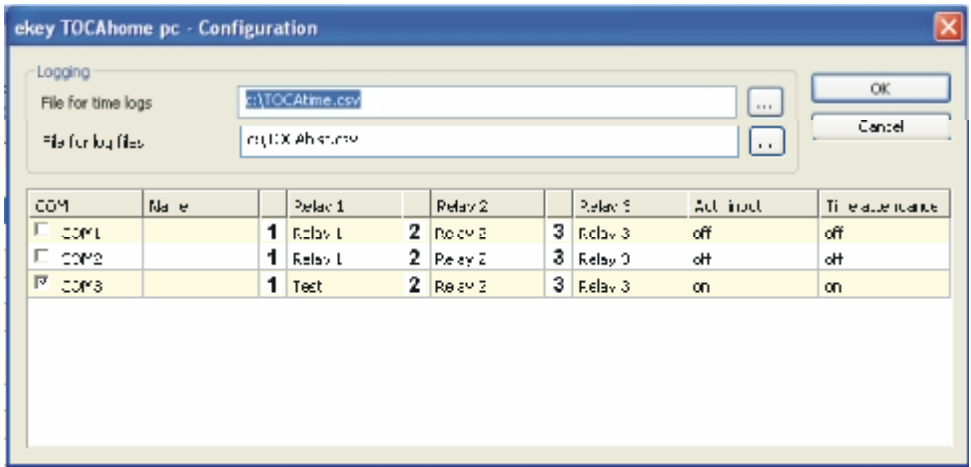


Figure C

Here the connected ekey TOCAhome pc unit can be assigned a name. In this example, the name *HomePC* was selected. The individual relays can also be named according to their respective functions. For example, relay 1 was called *Test*.

If desired, the names of the log files containing time and event data can also be changed here.

Time recording can also be activated and the options for automatic entry can be defined.

If the option is turned on, the respective file for recording time (TOCA-time.csv) documents the activities of the recognized users. If the file is locked or a STOP file is active, the data are stored in a buffer until released. The *On Screen* option additionally displays all registered activities on the screen at the right of the window as shown in Figure B.

If *Automatic Entry* is activated, the name of each person positively identified by the connected ekey TOCAhome pc unit is displayed at the current cursor position. This can be, for example, in a Word or Excel file. When *on + CR* is selected, a line break is inserted after each name. *On + TAB* inserts a tab character after each name.

4.2. *Creating a connection*

The top right menu button shown in Figure B is used to establish a connection between the PC and the ekey TOCAhome pc unit. This opens the window shown in Figure D.

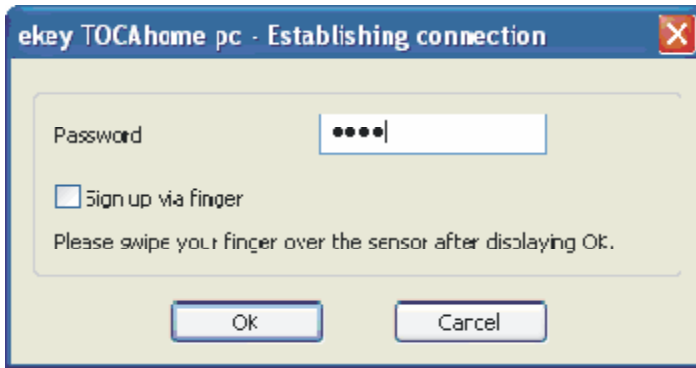


Figure D

The connection can be established with a password or by means of fingerprints stored in the ekey TOCAhome pc unit. If the latter option is selected, the respective person's finger must be scanned on the sensor field of the external unit. The manufacturer's default password is "1234".

The window shown in Figure A is displayed after the program is started.

4.3. *Relay switch times*

The *Relay* menu button is used to change the switch times of the corresponding relays (compare Figure E).

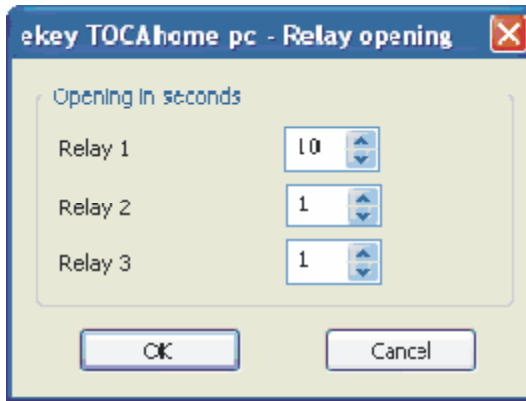


Figure E

4.4. *Changing the password*

Use the *Password* menu button to change the password. You will be required to enter the current password in order to select a new one.

5. User administration

The window shown in Figure B is displayed after the program is started.

5.1. *Creating users and users authorizations*

As soon as the connection is established, a new user can be created using the *Edit* button in the menu bar shown in Figure B. The window shown in Figure F is displayed.

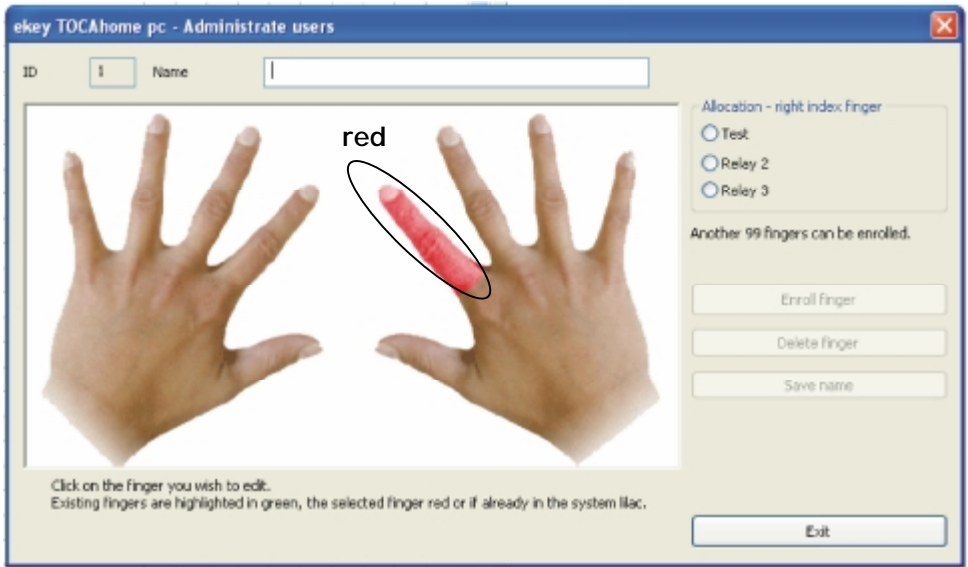


Figure F

A name must now be assigned to the new user. Select a name by clicking on a finger with the mouse cursor. The selected finger is displayed in red. This finger must now be identified with the relay with which it is to be coupled. The example in Figure F identifies the right pointer finger with the *Test* relay.

The *Save Finger* button then becomes active. After pushing the *Save Finger* button, the respective user must draw his/her finger across the sensor field of the external unit. The newly saved finger is displayed in blue.

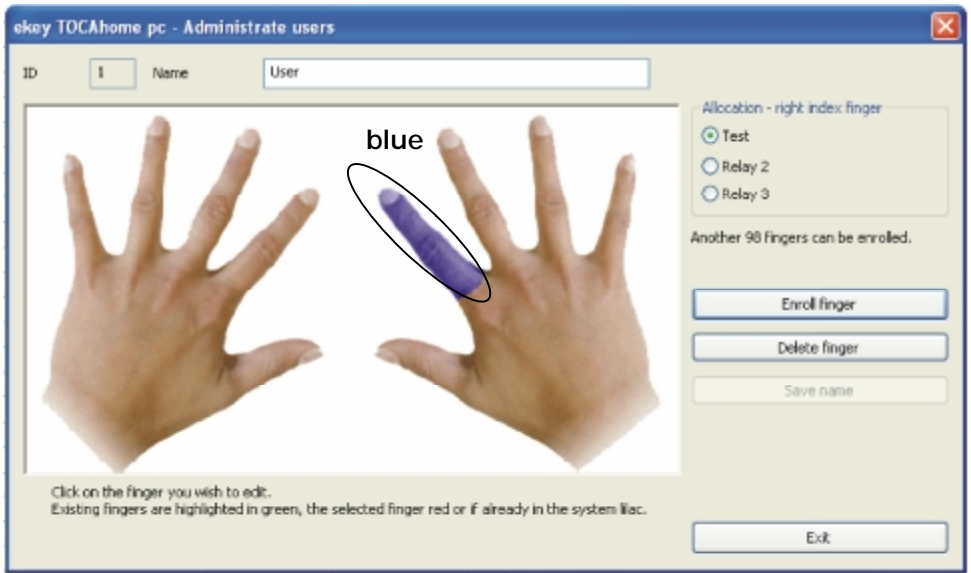


Figure G

Other fingers may now be saved. Fingers already in use appear green as shown in Figure H.

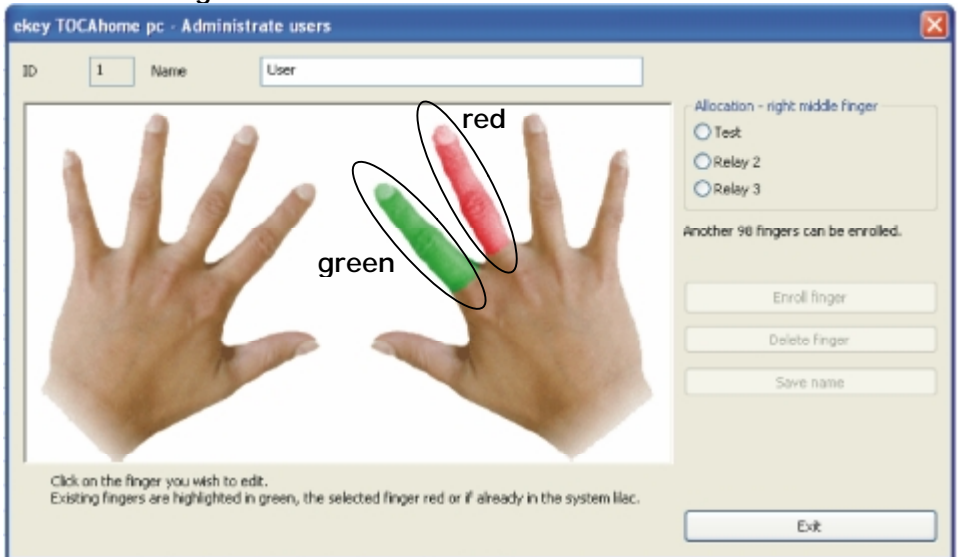


Figure H

The *Delete Finger* button is used to cancel authorizations assigned to a user. When deleted, the finger is no longer marked and can be assigned at any time.

The *End* button is used to return to the window shown in Figure B.

The names of saved users are listed at the left of the window (see Figure I). Each user is assigned an ID. Assignments of relays to users' fingers are displayed in this area. The fingers are designated F1 through F10, beginning with the small finger of the left hand. The number of the relays that can be activated with each finger is displayed in the corresponding field of the finger of each user.

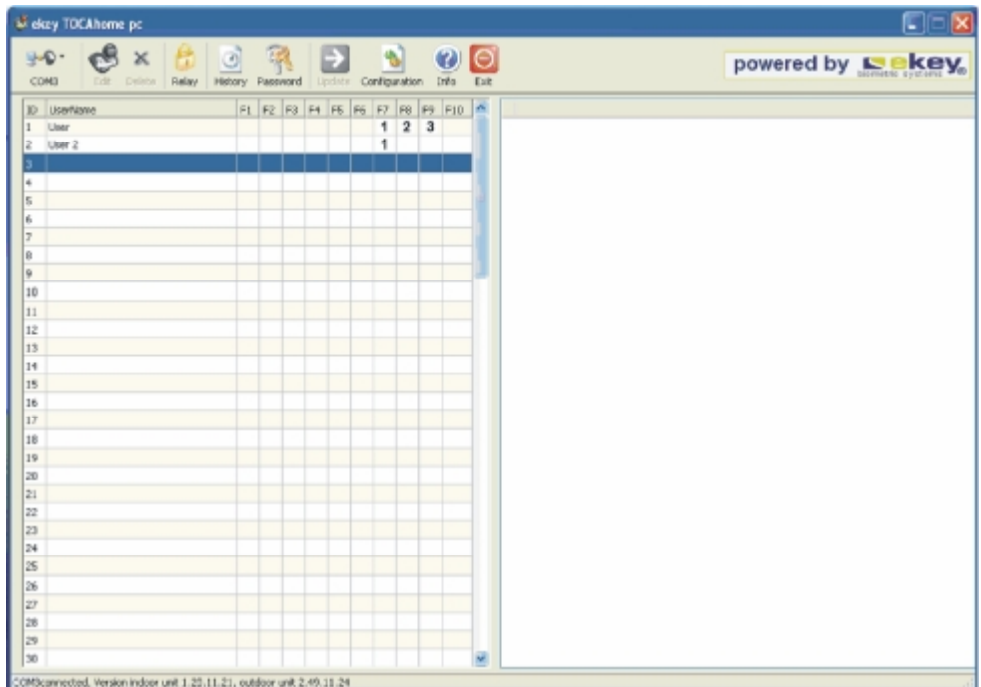
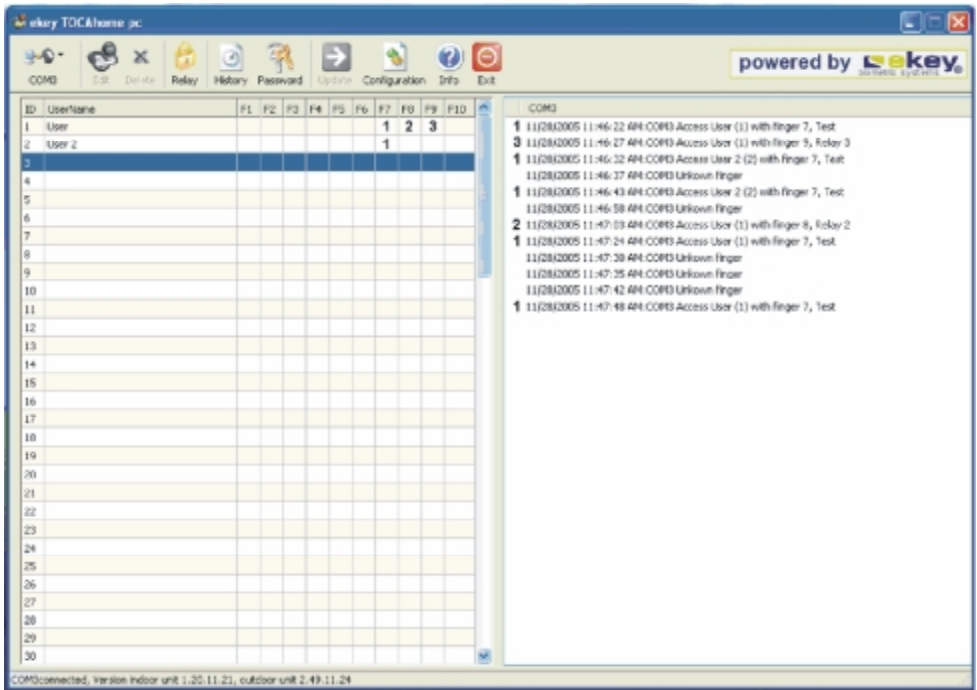


Abbildung I

5.2. Documentation of user activities

If time recording is activated on the screen, events are also documented accordingly.

The log shows which relay was used at which time by which user and with which finger. The log also shows the time at which an attempt was unsuccessful (see Figure J).



The screenshot shows a software window titled 'vkey TOCA/home_pc' with a menu bar containing 'COMB', 'Relay', 'History', 'Password', 'Configuration', 'Info', and 'Exit'. The main area is divided into two panes. The left pane contains a table with columns for 'ID', 'Username', and ten finger identifiers (F1-F10). The right pane contains a list of events with columns for 'ID', 'Time', 'Event', and 'Relay'.

ID	Username	F1	F2	F3	F4	F5	F6	F7	F8	F9	F10
1	User						1	2	3		
2	User 2						1				
3											
4											
5											
6											
7											
8											
9											
10											
11											
12											
13											
14											
15											
16											
17											
18											
19											
20											
21											
22											
23											
24											
25											
26											
27											
28											
29											
30											

COMB

- 1 11/28/2005 11:46:32 AM COMB Access User (1) with finger 7, Test
- 3 11/28/2005 11:46:37 AM COMB Access User (1) with finger 5, Relay 3
- 1 11/28/2005 11:46:32 AM COMB Access User 2 (2) with finger 7, Test
- 11/28/2005 11:46:37 AM COMB Unknow Finger
- 1 11/28/2005 11:46:43 AM COMB Access User 2 (2) with finger 7, Test
- 11/28/2005 11:46:58 AM COMB Unknow Finger
- 2 11/28/2005 11:47:03 AM COMB Access User (1) with finger 8, Relay 2
- 1 11/28/2005 11:47:24 AM COMB Access User (1) with finger 7, Test
- 11/28/2005 11:47:39 AM COMB Unknow Finger
- 11/28/2005 11:47:35 AM COMB Unknow Finger
- 11/28/2005 11:47:42 AM COMB Unknow Finger
- 1 11/28/2005 11:47:48 AM COMB Access User (1) with finger 7, Test

COMB connected, Version Indoor unit: 1.20, 11.21, outdoor unit: 2.49, 11.24

Figure J

If time recording is activated (see 4.1), the time log file also shows which user activated which relay at which time and with which finger. The *History* menu button adds the previously recorded access events in the event data documentation file. This documents the activities registered by the external unit in the order of their occurrence. The log shows which user (ID) used which finger to activate which relay, whether there was an unsuccessful attempt, and whether a user's finger was newly saved. Time data are not documented here.

The log file is in csv format and can be viewed easily, for example, in Microsoft Excel.

5.3. Offline operation

When not connected to a PC, the functionality of the TOCAhome pc unit is unlimited. Saved fingers can be used to continue activating relays, and the internal unit menu can be used to add new fingers and users. This is accomplished in accordance with the respective operating instructions.

After offline operation the program should be restarted on the PC. New users and fingers saved during offline operation are automatically transferred to the user list shown in Figure B.

The event data are stored in the external unit. As soon as the connection between the TOCAhome pc unit and the PC has once again been established, the new data can be transferred to the respective log file by pressing the *History* button.

Time data are not documented during offline operation.

5.4. Deleting users and user authorizations

The *Delete* button is used to delete the currently marked user and all authorizations assigned to him/her.

Individual user authorizations can be canceled as described under 5.1. by deleting the respective finger assignment.

6. Additional menu functions

6.1. Information

Displays information on the software.

6.2. Shutdown

Shuts down the program.

